



CYNOSURE[®] Palomar

Vectus[®]

a dedicated, powerful solution
for high-volume hair removal

Maximum speed and comfort.

Hair removal is the #1 requested energy-based aesthetic treatment, with 12.2 million procedures worldwide. It is expected to grow to 12.9 million procedures in 2016.¹

Nearly all women over age 12 engage in hair removal on a regular basis,¹ but males are a rapidly growing patient segment.²

12.2

MILLION
procedures worldwide

and
increasing

for both women
and men

Time is of the essence:
you and your patients
need a system that
provides results, faster.

*Vectus offers the largest
spot sizes for the fastest
treatments possible, which
means more throughput
and increased ROI.*

Cynosure Palomar
Vectus[®]



Largest Spot Size

Industry-leading large spot size

- 14% larger than the nearest competitor.*
- 2.5X faster than leading competitor.*



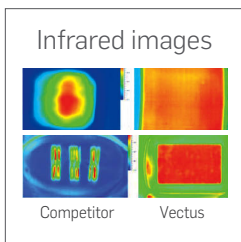
Skintel®

The industry's only melanin reader

- The Skintel Melanin Reader™ measures melanin content to better guide the treatment process.
- No more guessing...Skintel provides treatment confidence.

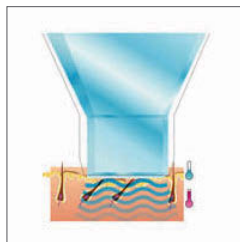


Efficacy, Comfort and Speed-Together



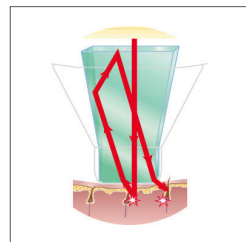
Uniform laser beams

Reduces hot spots for optimal treatment.



Advanced Contact Cooling™

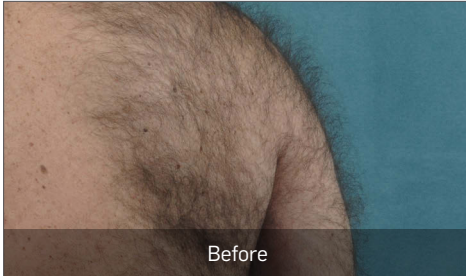
Enhances patient comfort.



Photon Recycling™

Advanced Photon Recycling technology increases fluence 1.5–2X,* and helps maximize treatment results.

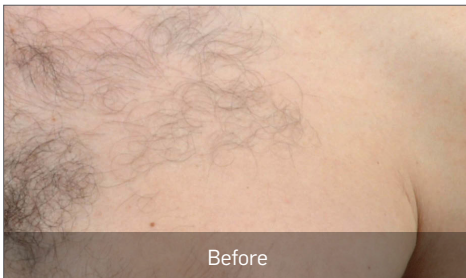
The Proof is in the Patients.



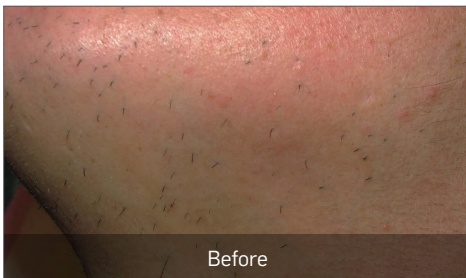
Photos courtesy of S. Doherty, MD



Photos courtesy of J. de la Torre, MD



Photos courtesy of S. Doherty, MD



Photos courtesy of J. de la Torre, MD

System Type	Diode	
	Small Sapphire Optic	Large Sapphire Optic
Wavelength (Nominal)	810 nm	810 nm
Pulse Width	5 ms–300 ms	5 ms–300 ms
Spot Size	12 mm x 12 mm	23 mm x 38 mm
Maximum Fluence	100 J/cm ²	20 J/cm ²
Repetition Rate	Up to 3 Hz	Up to 3 Hz
Coverage Rate	Up to 4 cm ² /s	Up to 17 cm ² /s
Maximum Peak Power	2200 W	3000 W
Electrical Requirements	100-240 VAC, 50/60 Hz (20 amp circuit required), Max Power Input 1100 W	
Size (H x W x D)	21.4" x 22.9" x 40.5" (54 cm x 58 cm x 103 cm), not including boom	
Weight	120 lbs (54 kg)	



Corporate Headquarters

5 Carlisle Road
Westford, Massachusetts 01886 USA
TELEPHONE 978 256 4200
TOLL FREE 800 886 2966
www.cynosure.com



SOURCES ¹ Global Aesthetic Market: An Era of Consolidation and Reorganization, Medical Insight Inc. 2013: 125. ²Mini-Report: Male Patients: An Important Market Segment, Medical Insight Inc. 2014:22. *Data on file, Cynosure, Inc.

Cynosure, Vectus and Skintel are registered trademarks of Cynosure, Inc. ©2015 Cynosure, Inc. Cynosure, Inc. owns exclusive rights to photography. Use of photography without written permission of Cynosure is prohibited.